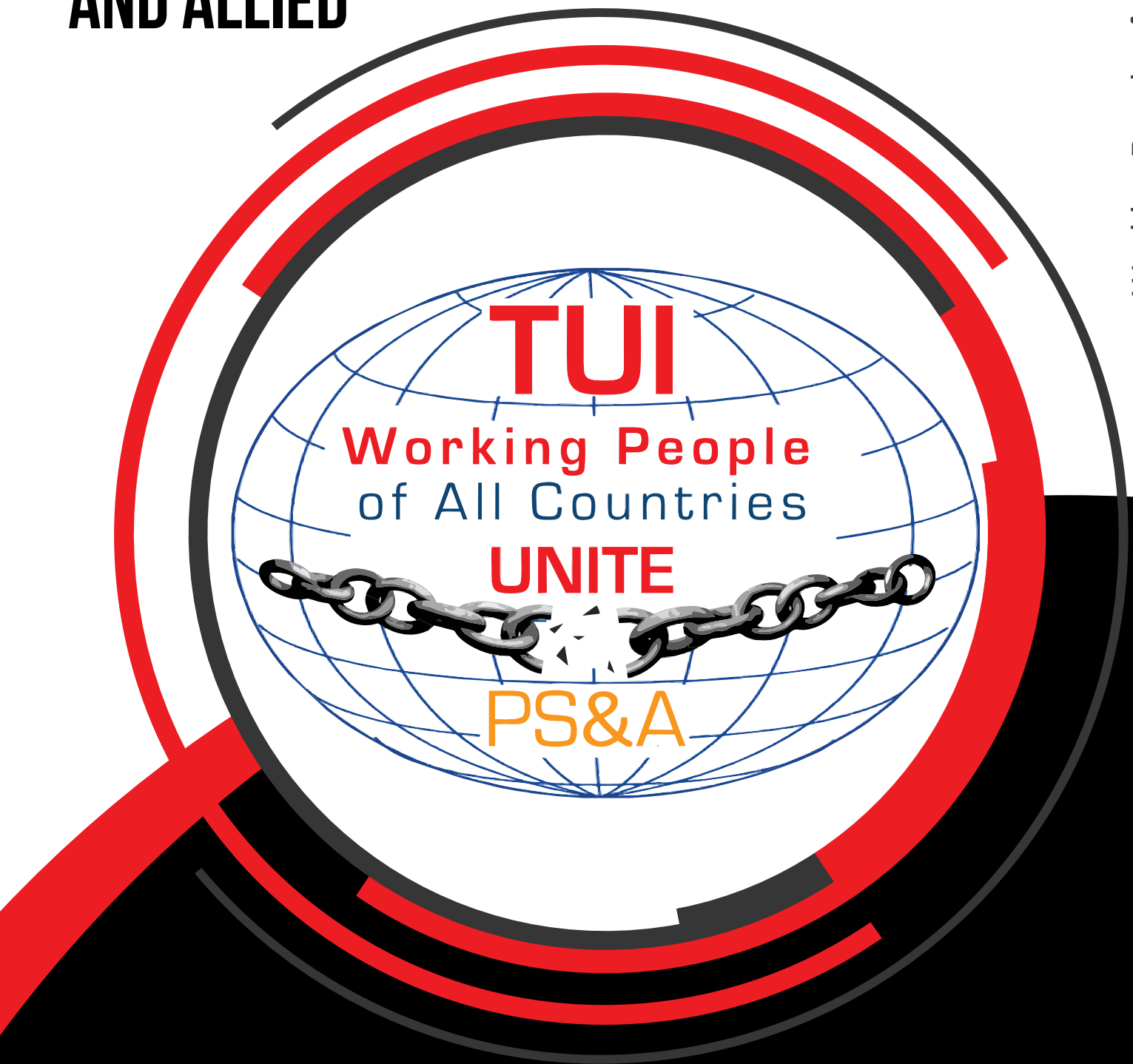




# WFTU | TRADE UNION INTERNATIONAL PUBLIC SERVICES WORKERS AND ALLIED

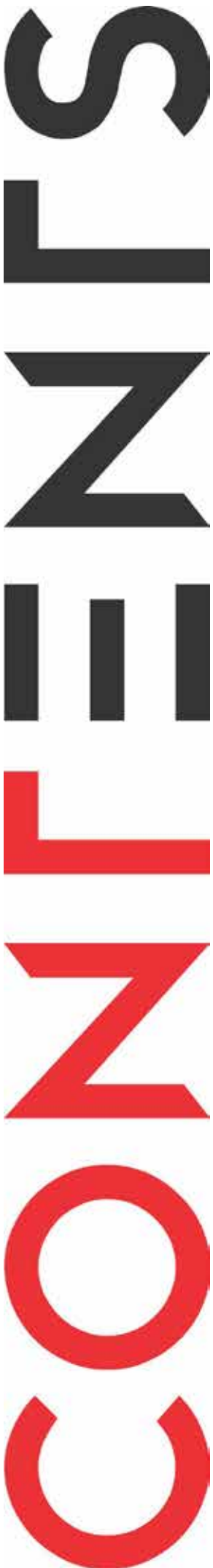
Working People of all countries UNITE



**DIRECTIVE MEETING PUBLICATION  
(11-12 March 2020)**



**WORLD FEDERATION OF  
TRADE UNIONS**



- 1. Editorial Comment**
- 2. TUI-PS&A President's Message to Directive Committee**
- 3. South African Communist Party (SACP) Solidarity Message to the Directive Committee**
- 4. COSATU Solidarity Message to the Directive Committee**
- 5. World Federation of Trade Union (WFTU) President's Message to Directive Committee**
- 6. Directive Committee Welcome Dinner – Special Recognition TUI PS& A Former President, Comrade Lulamile Sotaka**
- 7. Directive Committee Meeting**
  - 7.1 Continental Interventions**
  - 7.2 TUI PS & A Four (4) Year Platform**
  - 7.3 WFTU-TUI PS & A 75th Anniversary Program of Action**
- 8. Declaration of the First Directive Committee of the TUI Public Service & Allied**

# EDITORIAL COMMENT

## General Secretary, Comrade Zola Saphetha

Comrades, Friends and Compatriots

Receive profound revolutionary greetings from the Directive Committee of the 13th Congress of the World Federation of Trade union (WFTU) Trade union International of Public Services and Allied workers (TUI-PS&A).

The Directive Committee was convened from 11- 12 March 2020, Johannesburg inspired by the 13th congress theme "Join the struggles against privatisation – defend workers' rights". This was the first constitutional gathering following the 13th congress held in Cyprus in November 2019.

The Directive Committee meeting coincides with the global outbreak of the novel COVID-19 coronavirus. To date more than 3000 people across the world have lost their lives. Countries affected are still grappling to find a vaccine for the virus. The impact of this virus on the global economy is quite dire. The world economy has been contracting and a further slow economy growth is projected for the rest of the year.

The virus is likely to add to the cooling off effect, although it has a huge bearing on the working class. China and Italy are the most affected countries thus far and others cases are reported daily.

On behalf of the WFTU-TUI PS&A, we convey our solidarity to families and countries affected. We urge all governments to act swiftly, by putting in place measures that reduces the fatality rate and arrest new infections.

The Directive Committee convened in the year of the 75th Anniversary of the World Federation of Trade Unions. We join the millions of working people and their families in celebrating this milestone in the history of the class oriented, militant and democratic international trade union movement.

Since the founding of WFTU in Paris 1945, WFTU has been in the forefront of advancing the working-class struggle against the unjust, barbaric system of capitalism and imperialism. The World Federation of Trade Unions has been

“Comrades, the theme of the 13th Congress “Join the struggles against privatisation – defend workers’ rights is a clear directive to us in fighting against privatisation whilst simultaneously defending the rights of workers across the world.”



instrumental in defending the gains of workers all over the world. It stood against colonialism, racism, militarism and imperialism. It continues to struggle for an end to capitalist exploitation and for socialism.

In the course of the meeting, the TUI-PS&A officially launched the WFTU 75th Anniversary, outlining a detailed plan of action.

The WFTU TUI-PS&A 13th Congress held in Larnaca, Cyprus in November 2019 under the theme “Join the struggles against privatisation – defend workers’ rights”, resolved to build our organisational capacity and strength; to take up anti-privatisation campaigns, for political and ideological education and training of our cadres, and for international solidarity.

Comrades, the TUI Directive Committee, direct our affiliates to fight against privatisation and defend the rights of workers across the world. Governments across the world are implementing neo-liberal policies, imposing

austerity measures, privatising social services, curbing social expenditure, upon which the working-class is heavily depended, and targeting education, health and social security. This onslaught is part of the broader strategy of neo-liberal capitalism, against which we must struggle.

Comrades, we have produced this publication to reflect on discussions of the Directive Committee of the TUI Public Service and Allied convened in South Africa.

We trust you will enjoy reading the publication.

**Forward to Socialism!!!!**

**Down with Capitalism!!!!**

**Forward to Socialism!!!!**





# TUI-PS & A PRESIDENT

Comrade Artur Sequeira

## TUI-PS & A PRESIDENT'S MESSAGE TO DIRECTIVE COMMITTEE

### Greetings Comrades

Firstly, we want to congratulate the World Federation of Trade Unions for their 75th Anniversary, our international class-orientated federation which guides our ideology as the left. The 75 years of WFTU, has been years spent by the Federation in its existence in the company of the exploited workers of the world and the working-class and also trying to work on issues of inequality and its fundamental role as a reliable force of the left against capitalism and the sovereignty of the people for peace against the war of imperialism and for promoting socialism and communism.

This is first gathering of the Trade Union International Public Service and Allied (TUI-PS &A) post the 13th Congress held in November 2019 in Cyprus. The directive committee is convened at a time when the world is faced with the novel corona virus which the World Health Organisation (WHO) has declared a pandemic.

### Comrades

The TUI-PS & A is a very important affiliate of WFTU, especially the importance of workers that belong to this union, the work that is done in the world and also in the public service by the union especially for the democratisation of social services understanding that these constitute a big fundamental for the survival of humankind.

We take leaf from the World Federation of Trade Unions for its important work that is has done and also for transmitting its experience that comes from its affiliates and friends to our union. The struggle for all problems that we continue to encounter constitutes attacks on all sides, all fronts of our lives and in our work in the public service are part of the agenda of neo-liberalism, capitalism, monopoly government and transnationals who maximises profits and dividends through the exploitation of workers. Recently, we have witnessed an upsurge in direct attacks on all public service workers across the world through the lowering of salaries, increasing of working-hours,



reduction of workers in the workplace and directly attacking unions. The strategy of neo-liberalism is very clear more especially after the disintegration of the Soviet Union and this we have seen through the systematic crises of capitalism which continues to exploit workers.

Therefore comrades, we say that the mandate of the 13th congress which important and fundamental in the form of organising and communication we have to continue with this strategy so that we can function very well, improve our organisation and be more strong for the battles that lie ahead for workers in the public service. This is because we understand that we are strong as a union because of all the workers that we represent.

We have an important task to confront here, which is to continue with our objectives and aims to take our organisation forward, which

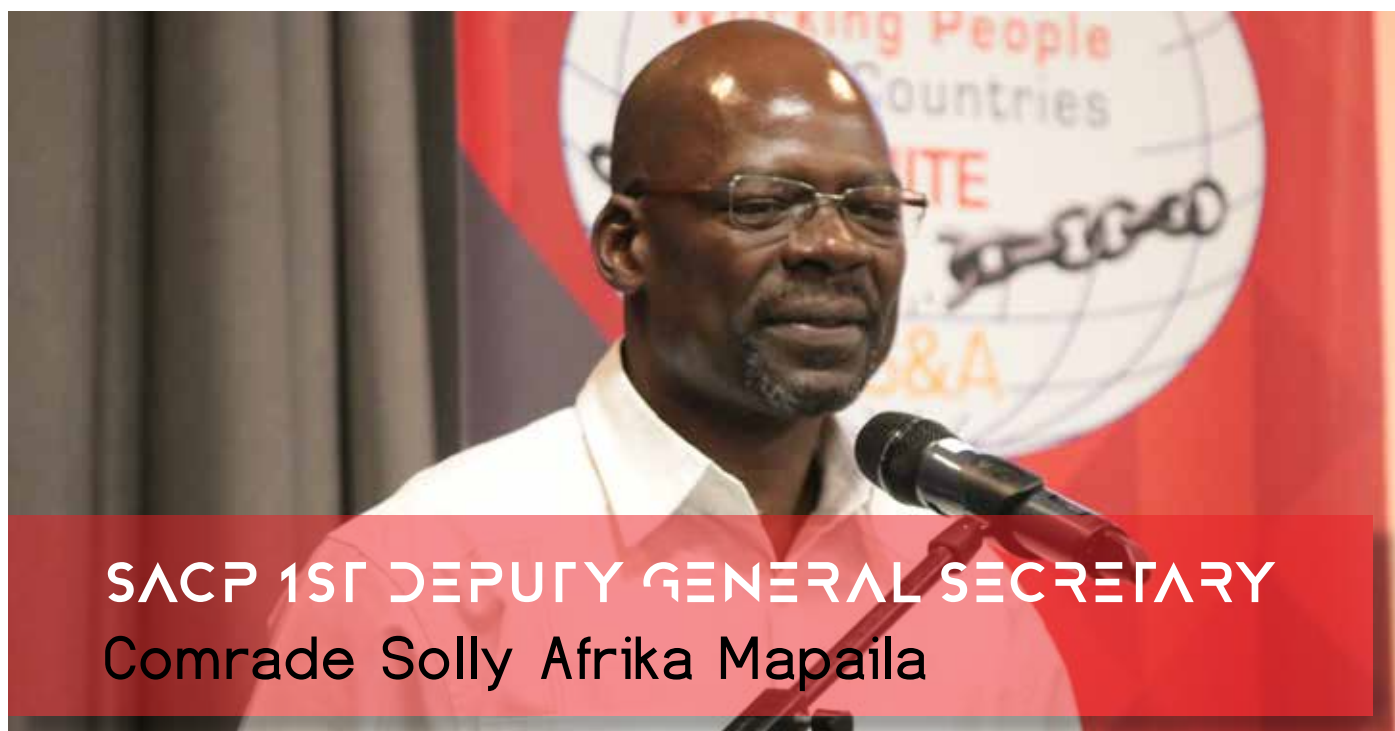
is an organisation for Public Workers and an affiliate of WFTU.

Workers in the world are looking forward for our input and help so that they can understand and know that they are not alone in their countries and also know the problems in those countries are universal problems because of the capitalist system that is raving workers in the world. It is for these reasons that it is important and necessary that workers of the world unite especially public service workers to be in solidarity with workers in the world.

**Viva 75 Years of WFTU Viva!!!!!!**

**Viva Public Workers Viva!!!!!!**

**Viva All Workers of the World Viva!!!!!!**



## SACP 1ST DEPUTY GENERAL SECRETARY Comrade Solly Afrika Mapaila

### 3. South African Communist Party (SACP) Solidarity Message to the Directive Committee

#### Greetings to the Leadership of WFTU-TUI PS & A

The South African Communist Party is happy that TUI-PS & A is holding its Directive Committee in South Africa during a year were we celebrate the mighty World Federation of Trade Unions as it turns 75 years. As you

know this federation of the working-class is an organ, a class organ. Its' task is complement the fulfilment of class struggle for the working class to finally win the victory against a very evil system – an exploitative system of capitalism, that has completely turned human beings into monsters. This is a system we must defeat.

Comrade President, the working-class movement is not strong as it should be, the international communist and workers movement is not leading very important class

struggles in the manner that it should be. This is not to discount the many struggles taking place world-wide in many countries and part of is the weak state of many communist parties in the world. The strongest communist parties preside through the cushion of the state system whether it's Cuba, China, Vietnam and others.

In other countries communist parties are not as strong and this is the responsibility of the trade union movement – a class orientated trade union movement like WFTU and TUI-PS&A should take responsibility for the establishment of communist organisations in their respective countries.

The South African Communist Party is having attempts and continues to build the Africa Left Network Forum as a platform to build communist parties in the African continent. The SACP has already produced two strong parties in Southern Africa through the Communist Party of Swaziland and the Communist Party of Zimbabwe. It is important for the trade union movement to never think that it can fulfill the end of class exploitation and end of capitalist system without a strong communist party. The communist are the basis from which we can finally win the war and fulfill the mission of

absolute freedom for humanity.

Today we have a strong international capitalist finance system that has generated massive chaos across the world, on the other hand the capitalist system is mopping itself as it reproduces this chaos that it produces for humanity driving digital transformation known as the Fourth Industrial Revolution which ofcourse the working-class has to be clear about this new era of development important as it is. We can say that if this transformation whether it's the development of new productive forces of the world is left to the owners of capitalist human inequality will rapidly grow.

The speed of inequality will never be merged, that is why the working class must fight for the control of this change in society. The fundamental point and final objective is to win the battle to end the capitalist system and without that there is no freedom of equality for the world.

**Forward to Socialism!!!!**

**Long Live WFTU!!!!**

**Long Live TUI PS&A!!!**

**Long Live COSATU!!!!**

# COSATU PRESIDENT

Comrade Zingiswa Losi

## 4. COSATU Solidarity Message to the Directive Committee

Greetings to the Leadership of WFTU-TUI PS & A

As the Congress of South African Trade Union [COSATU], we want to begin by posing the following question; what are the opportunities presented by the failure of capitalism in our countries respectively?



South Africa is in a technical recession and also the world economy is in a technical recession largely due to the recent coronavirus outbreak and this by implication indicates that capitalism is in a crisis.

So as the working class, what are the opportunities presented to us by the crisis in order for us to realise our slogan of Socialism is the Future! Build it now. The question we want to pose is whether we recognise the opportunity as a class currently to expedite the building of socialism now that capitalism is in a crisis.

As COSATU, we say South Africa may continue to be in a technical recession due to fact the country heavily relies on foreign direct investment and currently, with the coronavirus international trade has decreased and this presents a challenge for the capitalist class, but what does this current challenge mean for the working class in terms of an opportunity of building socialism. COSATU has for a while called for industrialisation, beneficiation, and

workers' control of the means of production.

An opportunity presents itself for the working-class at this moment when capitalism is in a serious crisis, the working class must recognise now that with its financial power and muscle as producers of wealth they have an opportunity to destroy capitalism and usher in socialism.

We are saying as COSATU, the World Federation of Trade Unions (WFTU) and TUI PS&A must lead workers of the world to realise that socialism is our only solution. There can never be a good timing for workers to unite and build socialism than now when capitalism is in the current crisis. As we celebrate 75years of WFTU, we have a responsibility to make workers realise that the unity of workers is very sacrosanct in achieving the goal of building socialism now.

Forward to Socialism!!!!

Viva WFTU!!!!

Viva TUI PS&A!!!!



# WFTU PRESIDENT

Comrade Mzwandile Makwayiba

## 5. World Federation of Trade Union (WFTU) President's Message to Directive Committee

### The Leadership of TUI-PS & A and Comrades

The Directive Committee is convened at a time when the World Federation of Trade Union is celebrating 75 years of its existence in

defending workers and the working-class from the barbaric system of capitalist exploitation and oppression. Our organisation in its existence of 75 years has been in the forefront of waging a relentless struggle against the imperialist forces guided by its ideological class orientation.

We need to channel our energies and



resources in liberating our members and workers from the bondage of exploitation. We must at all times be found at the forefront of championing workers struggles and ensuring that we decisively defeat the perpetual capitalist onslaught which prioritises profits above the health and safety of workers in the factory floors.

Comrades, in the United States of America it is a criminal offence to celebrate May Day which is an International Worker's Day this is because it's not recognised nor celebrated and such is supported by class collaborationist trade unions in America.

The World Federation of Trade Unions is celebrating 75 years as a class orientated trade union movement that pursues the struggle for socialism and understand solidarity struggles exceptionally very well against a barbaric capitalism system of exploitation and oppression of man by man and for that WFTU rallies workers to join a class orientated movement.

On international solidarity, the World Federation of Trade Unions has played a central role in solidarity struggles with the people of Palestine, the Cuban economic blockade, Latin American struggles and this demonstrates who we are as an internationalist class-orientated trade movement.

Our responsibility is to impart consciousness

to the working-class, educate society on the barbaric system of capitalism and explain that as long as capitalism exists unemployment will continue to skyrocket, explain to workers that the system of capitalism is not capable of protecting women against all forms of discrimination and that social ills can be attributed to the capitalist system.

In the South African context of waging a struggle against privatisation and austerity, the reliance and usage of Section 77 based on the Labour Relations Act will never achieve anything to stop the agenda of neoliberalism from entrenching itself. What is required in the South Africa context is a strong militant trade union movement that is supported by the communist party that will fight and lead the struggle against neoliberalism. Lessons that we should learn especially for the communist organisations is the ability to consolidate our gains and victories and we should build and invest in our organisations to take forward the struggle for socialism.

In relation to the building of World Federation of Trade Unions in African continent, this requires a dedicated effort of building consciousness, class-orientation amongst workers for them to belong to the World Federation of Trade Unions. Equally the impact and presence of TUI PS & A must be strongly felt in the African continent and make sure that we organise workers to belong to World Federation of Trade Unions.





## 6. Directive Committee Welcome Dinner – Special Recognition TUI PS& A Former President, Comrade Lulamile Sotaka

On Tuesday, 10 March 2020, The World Federation of Trade Unions (WFTU) Trade Union International Public Service and Allied honoured and conferred its Former President Comrade Lulamile Sotaka with a special recognition award for his outstanding role in the building and development of the Trade Union International.

The World Federation of Trade Unions (WFTU) Trade Union International Public Service and Allied bestowed the special recognition to comrade Sotaka for his sterling work in the international trade union movement. TUI PS & A General Secretary, Comrade Zola Saphetha in outlining the reason for conferring the award said it precisely because comrade Sotaka spent his life contributing to the struggle of workers and also the struggle of the working-class.

Comrade Lulamile Sotaka has been active in NEHAWU since its formulation in 1987 when he was a shopsteward in 1987, later got elected as an additional member of the National Executive Committee in 1989. In 1993, Comrade Sotaka was elected as the 1st Deputy President of NEHAWU and by implication became a member of COSATU Exco and Central Executive Committee Member. He

led as 1st Deputy President from 1993 until 2010. NEHAWU deployed comrade Sotaka to interact with International Body of Workers and also join the international struggle. In 1998, he was elected as Vice-President of TUI-PS&A and in 2002 was elected as acting President until he got elected as TUI-PS& A President in 2006 at the congress that was held in South Africa and got re-elected in 2009.

In 2010, Comrade Sotaka was appointed as co-ordinator of WFTU Africa Regional Office and became a member of the WFTU Presidential Council until 2019.

The General Secretary of PAYSEK PEO, Comrade Michalis Archondites and PAME Vice President, Comrade Babis Vortelinos also presented comrade Lulamile with a special award and a special memorabilia respectively for his outstanding role in the building of the TUI-PS &A.

## 7. Directive Committee Meeting

Is the leading body of the Trade Union International (TUI). It regulates the activity of the Trade Union International in the period between two International Congresses. Irrespective of the Directive Committee meetings before and after the International Congress, at least two ordinary meetings are held between two Congresses, one thereof in the middle of the



period between the two Congresses. In the course of these meetings it exercises control over the tasks adopted by the International Congress, decides the orientations for the coming period, an extraordinary meeting may be held on its own decision, or on that of its Secretariat. The Secretariat of the Trade Union International must, with the approval of the President, inform the members of the Directive Committee of the date, place and agenda of the meeting at least one month before its holding.

## 5.1 Continental Interventions

### Africa Region (English-Speaking)

The affiliates of TUI in Africa are strategically located in many countries. With the onslaught on the public sector throughout the continent, our affiliates need to be strengthened and ready to fight especially privatisation of public services such as water, health, education and power; advancing neo liberal policies and eroding the capacity and roles of the states to deliver public services to the people. Building unity will be paramount. The office of Vice President for Africa intends embarking on visiting the affiliates to develop a clear working system and also to participate in their programmes. As the TUI there is need

to embark on an aggressive leadership development and shop steward development programme across the continent in order to build organisational capacity. The TUI PS&A will embark on ideological development of our affiliates, build leadership capacity, strengthen organisational infrastructure and build capacity to run campaigns and recruit more members.

### Africa Region (French-Speaking)

The TUI Public Service and Allied is an international organization affiliated to the world syndical federation. Moreover, it remains an essential tool for the growth of public services worldwide through a permanent dialogue within Public and assimilated services.

However, the regional office for French speaking countries has noticed and condemned ruling governments for refusing in most cases, to recognize the TUI PS&A status as an important and essential partner. These governments also refuse a true and constructive dialogue in the public and assimilated sectors. Yet a true and constructive dialogue is a requirement of the international labour organization (ILO) convention Number 87, 98, 141 and 144.

The directive committee meeting will help adopt strategies that will better governments







that are still hostile to our actions and refusing social democracy. As such it's important and necessary for us that we commit to the sole purpose of enhancing and promoting our public services union.

The struggle of French speaking African countries remains the management of high migration levels which negatively affect French-speaking public services and this requires a particular attention to the issue in order to reconcile security requirements with humanitarian imperatives. The TUI PS&A should push for accompanying measures by so doing, illegal migrants awaiting repatriation will be able to benefit from optimal living conditions in adequate structures. It is important to note that this issue greatly affects countries like Congo, Senegal, Mali, Burkina-Faso, Cameroon, Niger and CAR.

We also need to bring our Governments to honour their engagements subscribed through their adhesion to international human rights and migrants' management. This during internal and external crises as well as during peace period.

### Asia-Pacific Region

In order to upgrade ourselves by analysing the old organisational status from the institutional build-up and affiliation issues to

a unified mobilisation of them and to mitigate with above mentioned challenges, it is necessary to enable the (TUI-PS&A) thereby establishing communication and coordination with internationalisation of demands of those members countries of WFTU, to establish social justice and social security, it requires becoming combative and strengthening labour organizations globally to control the job insecurity of labourers, reduction of employees' placement and positions, insecurity of work place and labour, reduction of indenture practices, and unmanageable career upliftment practices incurred by liberalisation, privatisation and globalisation.

In order to plan organizational building and mobilize organization, it is imperative to conduct continent based country wise programs regarding the WFTU allocated issues especially the effect of LPG to labour class and developing countries, and historical, philosophical and theoretical orientation of WFTU and (TUI-PS&A) to the Trade Union leaders and cadres should be made mandatory.

### Latin America Region

In the world the class struggle is exacerbated by the serious crisis of neoliberalism and capitalism and with Donald Trump who has been developing an aggressive, fascist imperialist policy, chauvinist, racist, anti-

immigration and endangering world peace. The Yankee Empire goes to the extreme of ignoring the Paris agreement for environmental care signed by most countries in the world and is destroying the natural habitat that humans have on the planet.

The majority of countries that are under imperialist capitalist domination, any possibility of development is closed and their productive apparatus is destroyed, reinforcing their dependence and primary economy exporting raw materials and deindustrialisation, the native classes submit to the empire and generate a source of market for foreign manufactures.

In Latin America and the Caribbean, US imperialism avoids losing its geopolitical hegemonic positioning and seeks to prevent anyone from getting into what their backyard considers and thus facilitating the appropriation of the wealth of these countries and for that purpose uses a strategy of Recolonization of Latin America, which goes through sweeping socialist, leftist, progressive and patriotic governments such as Cuba, Venezuela, Nicaragua, this reactionary strategy with the conspiracy of Almagro Secretary General of the OAS has already been imposed in Bolivia, comrade Evo Morales has suffered a police military coup d'etat from a neoliberal, fascist, racist and servant right of imperialism and the reactionary right of the world.

In Latin America and the Caribbean, the Yankee empire has been imposing its neoliberal globalization policy of wild capitalism, the neoliberal, conservative, fascist rightwing and brutal offensive to maintain its privileges and imposing liberal economic reforms, deepening the neo-liberal model of privatization of the economic complemented with fiscal adjustment and budget cuts to the social sectors health and education affecting the economic and social labour rights of workers and peoples.

## 5.2 TUI PS & A Four (4) Year Platform

### 4 Year Platform for TUI PS & A

TUI-Public Services is the sectorial structure of the World Federation of Trade Unions (WFTU) and carries out its actions in the sector central,

regional and local Public Administration, Public Services and the like in all continents, in conjunction with the overall action of the WFTU on a Continental and World level.

This understanding recognises the fact that workers and affiliates of TUI PS&A are located in the various locals of its different regions/continent; by implication, this means that the implementation of the TUI PS&A POA happens primarily at the continental and local level, while the centre (central office) plays the role of coordinating and overseeing the overall international work of the TUI Public Services in WFTU.

This program of action is guided by an integrative analysis of the economy, society and politics - in essence the analysis of class struggle - involving the exploitation of labour by capital within the capitalist mode of production. From this perspective, capital and labour represent two antagonistic classes of ownership class that controls production (means of production) and the dispossessed labouring class that provides labour for production.

With this understanding, the World Federation and Trade Unions (WFTU) and its sectoral component the Trade Union International Public Service and Allied Workers (TUI PS&A) recognises concretely that societies progress through class struggle.

Imperialism as the highest stage of capitalism fundamentally remains an economic phenomenon which must always be understood as described by Vladimir Lenin "five essential features" in 1916. Precisely because to date it has formulated many forms of defence, for purposes of this program of action we will highlight only four forms of defence, namely:

- Constitutions through protecting property clauses – no tampering with means of production and the ownership remains with the few – monopolies.
- Capture of the state and progressive organisations using material incentives over moral incentives to totally collapse or derail the real revolution for the working class.



- Flags of convenience through restrictive regulations in the owners' country.
- Privatisation as a strategy to maximise profit while weakening the capacity and ability of the state to intervene to societal developmental path.

Without elaborating on these four forms of defence but one thing vivid is the reversal of the hard – won gains of the working people in particular and working class in general by cutting wages, tempering negatively to labour relations, destruction of public sector jobs, cut in retirement and pension benefits, destruction of collective bargaining, privatisation, increase the retirement age, increase of precarious labour, etc.

The launch of the offensive attack directed to the class-oriented trade unionism and collective bargaining characterised by divide and conquer aimed at creating divisions between workers in order to break the solidarity among the working class and to weaken the trade unions has been an order of the day which must be fought against if we are to preserve the unity of workers under the banner of class-oriented world federation of workers such as WFTU and its sectoral components in defence of workers and working class as a whole.

The imperialist attack can only be stopped by the intensification of class consciousness to the working people and working class in order to venture into a real revolution for itself hence class-oriented trade unionism united in action around what is common: the defence of the rights, interests and aspirations of the workers, for their emancipation and a society free from exploitation of man by man.

Given these realities, the Trade Union International Public Service and Allied, the component of the class-oriented world federation – World Federation of Trade Unions (WFTU) consciously decided to develop its comprehensive four year programme as a programmatic response to the imperialist onslaught directed to the working people and working class in general which will be implemented through continents, regions and affiliates in different countries cohesively driven from the centre – the headquarters of the TUI PS&A and supported ideologically and organisational by the central office of the WFTU.

### Internationalism - Anti-imperialism Action

- (a) TUI PS&A will celebrate its 75th anniversary throughout 2020 by hosting a number of events that will culminate



in the major celebrations on the 03rd of October 2020.

- (b) Regions and locals of TUI Public Services shall participate in WFTU solidarity campaigns with the people facing the most Brutal of Imperialist aggression (Like Palestine, Venezuela etc.).
- (c) The building and strengthening the class oriented trade union movement in the TUI Public Services through engagement with other class oriented unions and working class organisations that are not affiliated to WFTU.
- (d) TUI Public Services international events (seminar, conference or workshop) against privatisation of public services and outsourcing in the public service. Events held in all continents.

### Trade Unions Rights

- (a) Campaign for free trade union activity by TUI Public Services in continents/regions and countries where public servants are prohibited from forming or joining a trade union. This be done through WFTU/TUI PS&A Regions.
- (b) International campaign on the protection of workers and union rights from the imperialist onslaught.
- (c) Campaign by TUI Public Services affiliated unions to organise all workers in the public service regardless of the nature of their contracts.

### Anti-privatisation Campaign

Increasingly, whole sectors of the economy that are essential in the provision of basic public services to workers and the working class broadly are being privatised so as to facilitate profits for big business. This process has the effect of undermining the quality of jobs of workers while at the same time denying the working class access to such commercialised social services. There is a need for a strong anti-privatisation campaign that focuses on the following:

- Campaign against the privatisation of essential state owned companies and the provision of social services such as water, electricity, transport, education etc.
- Campaign for free quality health care and

free universal free education for a healthy and capable working class.

- Fight the privatisation and public spaces and natural resources that leads to the marginalisation and exclusion of the working class...
- Campaign for a state that intervenes strongly in the economy in favour of the development of the marginalised sections of society.

### Collective Bargaining and Social Security Campaigns

- (a) Campaign for stable, fulltime employment for all public service workers in all TUI Public Services continents.
- (b) Advance the WFTU campaign for a 7-hour working day, 5-day working week, 35-hour working week in the public service internationally.
- (c) Engage in action, in regions/continents to realise WFTU demand for the retirement age to be set at: 60 years for men and 55 years for women.
- (d) TUI Public Services affiliates and continental bodies to campaign for the establishment National Collective Bargaining structures and a living wage that satisfies the needs of worker in all spheres of the public sector.
- (e) Campaign for social security to create the conditions for pensioners, people with special needs and the unemployed to live in dignity.
- (f) There must be a campaign for the Professionalization of Public service so that the working class as the major beneficiary of public service can receive the best of such.

### Trade Union Education

Following WFTU as the class oriented Federation TUI PS&A must emphasis more on Ideological training of the working class for the working class to be able to change the world, it must first understand it. The trade union education must go beyond Shop stewards into members themselves for them to understand their location in the production process.

- (a) TUI Public Services continental structures to hold seminars on the history of the



WFTU and its role in the anti-imperialist and anti-colonialist struggle in their respective continents.

- (b) Hold seminars on special/specific issues, related to the public sector, organized in various countries under the auspices of the TUI Public services WFTU member organizations.
- (c) Hold seminars targeting workers in the Public Service to induct them into the history and traditions of WFTU and the role, and relevance of class oriented trade unions in the public sector.
- (d) Design and develop training publications, in conjunction with WFTU, which will be used by TUI Public Services affiliates for the training of their members.
- (e) Ensure participation of TUI Public Services affiliates and members in the WFTU Trade Union School of Training.

### Workers Unity and Solidarity

- (a) For the TUI PS&A, all workers are brothers and sisters. We are opposed to 'nationalism' that divides the workers; we are opposed to religious fanaticism that generates artificial divisions; we are opposed to racism and xenophobia that gives bourgeoisie the ability to heighten the level of exploitation in detriment of the workers.

### The Rights of the Youth, Women and Immigrants

- (a) Work with WFTU committees for the Youth, working women, immigrants, to strengthen TUI Public Services work in this area in continents. The priority of such campaigns must be more in countries where such phenomenon of Women, Child and Youth exploitation exist the most. For example, for Youth and women issues Africa must be suggested for stronger action
- (b) Working closely with relevant WFTU youth, women and migrant committees, the TUI PS&A must engage in struggles for equal pay, decent jobs and sexual harassment codes in defence of vulnerable workers.

### Communication and Publicity Strategy

- (a) Updating and management of the TUI Public Services website.
- (b) Development of TUI Public Services organisational, political and campaign publications on the work of the sector.

### Building the TUI PS Organisational Strength

- (a) Project to map the global public service trade union landscape and draw more progressive public service unions and workers into the fold of WFTU.
- (b) Develop programme to create functional TUI PS Regional Structures in all Continents.
- (c) Campaign on the payment and management of TUI Public Service subscription fees.
- (d) Campaign to improve communication and coordination between TUI Public Services central, regional and local offices.

### Conclusion:

This platform will serve a guide for TUI PS&A Continents, regions and affiliates in the course of developing and executing their respective programmes based on the peculiar conditions they face. The TUI central office, guided by the directives and programme of WFTU will oversee the implementation of the tasks set out above for the duration of the term of office of the current TUI PS&A leadership.

### 5.3 WFTU-TUI PS& A 75th Anniversary Program of Action

#### TUI PS&A WFTU 75TH Anniversary Program of Action

This is a framework that mainly provides some general guidelines for cohesion and focus on the content and forms of events to mark the 75th Anniversary of our international trade-union centre, the World Federation of Trade Unions (WFTU). In 1949, WFTU forged ahead at the second World Trade Union Congress in Milan Italy to build the organization, despite the setback of the split. It passed an important resolution that was to shape the development

of our organization – to establish Trade Union Internationals (TUIs) to organize activities in the various sectors or trade branches.

Therefore, the celebration of WFTU involves all the TUIs, including ours, the Public Service & Allied. The following are the recommended forms of activities to give expression to the celebration of our revolutionary heritage developed over the 75 fighting years. It is recommended that affiliates at least organised as many of such events across the country and localities. So there is no timetable, however it is recommended that in the first half of the year we focus on the history of WFTU. This is only a guide and so not all the suggested seminars and workshops must be organised. It is recommended that at least all forms of arts and culture events must be undertaken, with the 3rd October 2020 being the culmination. Photos and films of the anniversary events must be shared with the WFTU family on its website and Facebook and all affiliates are encouraged to participate in the WFTU projects such the Open Essay on Historical figures of the WFTU. As the TUI PS&A, we shall have a similar open contest in a form of portraits on any significant historical event, figure or symbol at the later stage.

## Seminar and Workshops

By their very nature, seminars and workshops are educative through different forms in which they are organised. They also connect organisations and individuals through sharing experiences. They are therefore important with regard to preserving the militant traditions, historical milestones and in propagating class consciousness and ideological clarity. By their nature they require working with other organisations and this is correct as WFTU's struggles have always involved alliances and partnerships. Therefore, seminars and workshops shall feature as part of the anniversary events especially in the built up months to the 3rd October 2020. It would be import to begin with WFTU's history, after all that's what anniversaries are mainly about. To draw on the history in order to share knowledge as to where WFTU is coming from but also to reflect on the changing present to grapple with where it should go and adapt. Below is a framework on the topics and themes, picking key subjects in WFTU's history, i.e. its founding in the context of the struggle against fascism, the historic setback of the split and struggles in contemporary capitalism with other intersecting struggles against Neoliberal capitalist globalisation.

Subject	Topics and Themes	Trade Union Scale	Format
WFTU History: 75 Fighting Years!			
1. Imperialism, Neo-Fascism, Racism, Sexism, Homophobia, Xenophobia and other discriminations and forms of exploitation: The first resolution adopted by the founding Paris Congress declared that: "one of the primary tasks of the WFTU and the trade union movements of all countries is to fight for the speedy and complete eradication of fascism..."	Emerging forms of neo-fascism in the imperialist core as well as in the global-south. Seminars could be held around topics such as: <ul style="list-style-type: none"> <li>• Trump's brand of imperialism in South America</li> <li>• Struggles within US by workers, Black-Lives-Matter, the migration ban on some Muslim majority countries.</li> <li>• Extreme Christian, Jewish and Muslim political mobilisation and impact on the working class</li> </ul>	Continental regions	Panel of union leaders which may be mixed with NGOs activists, academics or experts leading the discussions.





<p>2. The Historic Split and Setback: Some western affiliates of WFTU disagreed with statements and resolutions supporting national liberation movements against colonialism. Another key disagreement was when these unions tried to impose support for the US government's Marshall Plan to rebuild Europe. Majority rejected it. At the WFTU Executive Bureau meeting in Paris on 19 January 1949 the British TUC President Arthur Deakin read out a letter demanding "suspension of all WFTU activities for a period of 12 months". Otherwise, threatening withdrawal. Again it was rejected and then the British, Americans and Dutch unions walked-out, splitting WFTU.</p>	<p>The founding of WFTU was an achievement of workers and trade union unity. WFTU was founded on this principle, to unite the workers across the world. Seminars can discuss topics such as:</p> <ul style="list-style-type: none"> <li>• The state of the trade union movement today: class-orientation vs class collaboration,</li> <li>• Marx, Engels and especially V.I. Lenin's work on labour-aristocracy (yellow unions in imperialist countries and global-south).</li> <li>• Duplicate WFTU History Lecture throughout the year</li> </ul>	<p>All affiliates at national level</p>	<p>Panel of union leaders that may include union officials and researchers.</p>
---	---	---	---



<p>3. WFTU in post-Cold War and the 21st Century characterized by stagnation of capitalism in most regions: The watershed 13th World Trade Union Congress made the assessment that "economically and socially speaking, 'bloc' politics seriously handicapped the action, form and influence of world trade unionism, and more especially its international structures. These upheavals bring to the fore the central issue of the role and place of the social movement and the trade union movement."</p>	<p>The Cold War coincided with the rise of Neoliberalism. Since then western imperialism dominates, but it has challenged the rise of China and Russia and it seems to be getting weak. But the imperialist wars escalated in the absence of the USSR. Seminars can discuss topic such the imperialist world order today –</p> <ul style="list-style-type: none"> <li>• Are China &amp; Russia counter-hegemonic?</li> <li>• Capitalism has been challenged in the west itself since Occupy Seattle in 2011, and the latest is the ongoing struggle of the Mouvement des Gilets Jaunes (movement of the yellow vests)</li> </ul> <p>Das Kapital in best-sellers lists, what does this mean for WFTU and what is our analysis for the class oriented vis-à-vis class collaborationist unions?</p> <ul style="list-style-type: none"> <li>• Radical transformation and counter-revolution in South America, what now – what this means for us?</li> </ul>	<p>All affiliates at national level</p>	<p>Panel of union leaders that may include union officials, participants from communist and workers parties, researchers and academics</p>
<p>Components of workers' and working class struggles today</p>			

1. Intersecting oppressions and struggles: In addition to our common struggle against imperialism, working class struggles include struggles of women in society and workplace, high youth unemployment, job-insecurity and lack of social security, etc.	Seminars can be convened around topics such as impact of the digital technologies on the workplace and future of work, access to higher education, feminisation of poverty, precariat or vulnerable workers, etc.  Visit to workplaces and make workers relate their experience of capitalist exploitation and their response to it.	All affiliates at national level	Workshops and seminar directly placing women and young workers at the centre, including community care workers, domestic and workers in casualised contracts.
2. Climate Change: Scientific evidence show that human interaction with nature is interdependent and that it was only after the capitalist industrial revolution in the 1770s that human started to destroy nature. It now known that we are facing the catastrophe of climate change, international agreements are there but can't be implemented and unions have been talking about "just transition".	Seminars can be convened around topics such as: Health and Safety at the workplace and communities around industries, Can capitalism co-exist with ecological sustainability, Can there be Green Capitalism?	Continental regions as well as all affiliates at national level	There can be workplace workshops and seminars at different levels. At the workplace discussions must look at the impact of work and conditions on workers' health, rights and campaigns.

## Workers' Arts and Culture

Under capitalism, the dominant arts and culture are bourgeois in orientation. Since arts and culture are expressions of lives and experiences, naturally in every country there have been radical and counter tendencies because workers' and working-class lives and experiences are different and opposites of those of the bourgeoisie and its attached middle-stratum or petty-bourgeoisie. Importantly, artistic and cultural expressions of the working class is always more reflective of the local, indigenous and national struggles, and this is often revealed in class battles through song, dance, poetry, writing, painting, food and clothes. The following are recommendations which can be considered in the local or national context:





EVENTS	FORMS OF ACTIVITIES
3rd October 2020 Anniversary - Workers' Festivals	We recommend that in every country affiliates must jointly organise the big festivals on the 3rd October 2020. This is the day of WFTU's birth and so it must be celebrated with popular music genres and folk traditions according to context but also forms of proletarian internationalism. Other countries traditionally organise marches on the anniversary day. We recommend that this tradition must continue and on the day they can be combined with events such as music festivals.
Audio-visual Material	Create and keep articles reflecting WFTU struggle
Symposium	National organisation to do symposium on WFTU History of struggle
Book-fares	A key weapon in class struggle is knowledge. We recommend that book-fares can be organised with publishers, communist and workers parties and unions can make available through print important and accessible theoretical materials. These can be combined with poetry sessions invite workers and others and progressive professionals to participate.
Memorabilia and Symbols	We recommend that for these events, affiliates should produce different forms of materials about the 75th Anniversary. They can be lapel pin brooches, ties, T-shirts, jackets, bags, etc. WFTU and TUI banners marking the anniversary must drape all our events.
Assessment of work done	By October TUI&A Central Office and region must assess the impact of the 75 years Anniversary Program.
TUI PS & A WFTU 75th Years Anniversary	Seminar to unveil the 75th Anniversary Celebration Program on the 12th March 2020



## 8. Declaration of the First Directive Committee of the TUI Public Service & Allied

11-12 March 2020,

### Johannesburg, South Africa

The first Directive Committee meeting of the XIII World Congress of the TUI Public Service & Allied was successfully convened in Johannesburg, South Africa, on the 11th to 12th March 2020.

The meeting took place against the background of the unfolding immediate threat to humanity by the spread of the coronavirus that causes COVID-19 disease. The TUI Public Service & Allied joins millions around the world in expressing solidarity with all those that are suffering from the coronavirus, which has already registered more than 100 000 laboratory-confirmed cases and fatalities across all continents. This virus has already caused massive instability and disruptions in the lives of the working class and the broader populations across the world, especially in People's Republic of China.

We commend the People's Republic of China for its swift and exemplary response to the coronavirus outbreak, which gives confidence that through responsive government-led interventions, the tide of the coronavirus can be stemmed.

The spread of the coronavirus has led to the shutdown of workplaces, thus threatening jobs, worsening the living conditions and destabilising the livelihoods of the working class

The TUI Public Service & Allied calls on all its affiliates and members to demand:

- That all governments must implement the World Health Organisation's consolidated package of preparedness and response to the Coronavirus.
- The training of all frontline workers at ports of entry in handling the movement of people and cases of the affected individuals.

- The provision of personal protective equipment to all exposed workers working at the ports of entry.
- The training of all relevant staff on handling coronavirus and COVID-19 disease, including on all the necessary clinical protocols that must be followed in all healthcare centres.

The humanitarian crisis caused by the coronavirus, comes at a time of an underlying capitalist crisis and imperialist wars. The crisis will aggravate mass displacement and migration affecting millions of people.

The TUI Public Service & Allied condemns the US government and the European Union on their inhuman treatment of refugees and immigrants, in this regard, we demand:

- The respect of the rights of refugees under international conventions.
- The abolition of the Dublin Regulation and the EU-Turkey agreement
- The closure of all prison camps for refugees and migrants; and
- No participation, support or involvement in NATO, US and EU actions and operations in the Middle East region that support Turkey's invasion of Syria, interventions in Libya, Palestine that are perpetuating war and disaster.

We currently witnessing turmoil unfolding in capitalist stock markets around the world, especially in the oil market as a result of the breakdown of global production in the midst of US provoked trade war with China as well as the rising tensions around the unfolding catastrophic imperialist war in Syria and threats against Iran.

The Directive Committee condemns the escalation of Yankee imperialism across the world, especially in Latin America. The USA is now the leading force in creating conditions for the rise of racism, sexism, xenophobia and other forms of hatred and discriminations across the world. Under Trump, it has now nakedly

stepped up its sabotage of the economic development that is led by progressive and revolutionary governments, including in China, Cuba, Venezuela, Nicaragua, Bolivia and other countries. In Latin America, this imperialist offensive has led to direct interventions to destabilise political order and cause coups in order to put in place Neoliberal puppet governments organised around the Lima group and to repress the revolutionary forces.

Thus, the TUI Public Service & Allied also pledges solidarity to the people of Palestine in their resistance against the Zionist occupation by US-backed apartheid Israel.

The Directive Committee meeting reaffirmed its commitment in the fight against capitalism and the implementation of neoliberal policies within countries through international, regional trade agreements as well as by bourgeois governments. Our stance against the privatisation of public services is the centre-piece of our programme of action. Taking into account our countries peculiarities, we shall embark on mass mobilisation and protest actions against the privatisation on the 75th anniversary celebrations of WFTU International Day of Action from the 3rd October and around.

We demand an end to the privatisation of public services. We are opposed to international trade in services, corporate tax cuts and campaign for collective bargaining. We are opposed to the super-exploitation of women and children, to job losses due to the application of new intelligent digital technologies, to the destruction of the environment, the abuse of the vulnerable migrant workers and suppression of wages within countries.

The Directive Committee will implement its four year platform, through national and regional activities. In this regard, all TUI PS & Allied affiliates and organisations shall involve members at their workplaces and communities in different types of events.

In addition, the Directive Committee passed the following resolutions:

- To rebuild and strengthen the links and communication within the whole family of TUI, including reviving relations with the

trade unions that historically belonged to our TUI and others.

- To establish a committee comprising the President, General Secretary, Chairman of Finance Control Commission and other two Vice Presidents to be confirmed by the Secretariat meeting to consider improvements and amendments on our constitution in order to align it with our statutes.
- To step up our media work, in particular making improvements on our communication within our family and the broader WFTU community and taking advantage of the modern information communication technologies.
- To implement the agreed affiliation contributions by member unions in line with the statute/constitution in order to strengthen our international organisational duties, whilst taking into consideration the financial challenges that some of our member unions are experiencing. We reassert our principle to remain a militant and independent public service trade union movement, and will do all what we can to depend on our own resources and members in financing our work.
- To put in practice our principled directive that every affiliate of the TUI must recruit other trade unions into the fold of our class-oriented international in order to build working class power for socialist struggles.
- To step up the mobilisation of women workers as part of the broader programme of the WFTU to advance collective workers' rights and to take up issues of women, ethnic minorities, youth, children and migrants.
- The Directive Committee also pledges its solidarity with the struggle of civil servants in Peru against the Emergency Decrees 014-20 and 016-20 which are harmful to workers and erode trade union rights.

The TUI will mark the WFTU 75th anniversary





celebrations with seminars, music, cultural events and demonstrations organised in all regions and continents as determined by the local conditions and traditions. Some of the celebrations will take the following form in the different continents:

- French speaking Africa to organise a regional conference in July 2020 in Kinshasa, DRC to address high level migration in the region including a campaign to mobilise youth into the WFTU.
- PASYEEK will collaborate with the federation of PEO to host the international event on the 2nd of October to honour the 75th anniversary of WFTU. In the event it is expected that a big number of international delegates will be invited.
- PASYEEK will organise a seminar about the history and action of WFTU since its establishment.
- As part of the WFTU 75th anniversary celebrations, PASYEEK will host host in its hotel apartments between 60 to 80 children coming from special schools as well as children who are under the care of the Welfare State Services.
- PASYEEK will also organise a cultural event (theatre performance) honouring the 75 years of WFTU.

- An anti-privatisation national forum in the French speaking Africa region on 03rd October.
- In Latin American region, a seminar on the WFTU and anniversary on 28-29 August 2020
- Egypt, seminars, events, training for class orientation against collaboration.
- Portugal, demonstration on anti-privatisation and WFTU anniversary celebration.

The WFTU TUI Public Services & Allied will convene its Secretariat meeting on the 17th September 2020 in Kathmandu, Nepal and the Directive Committee meeting on the 18th September 2020.

**VIVA TRADE UNION INTERNATIONAL PUBLIC SERVICE!!!**

**LONG LIVE WFTU!!!**



# NOTES



# NOTES





# NOTES



**WORLD FEDERATION OF  
TRADE UNIONS**